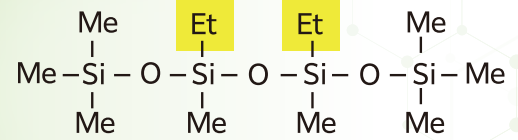


KF-4422 NEW

Volatile Silicone Fluid

Structure



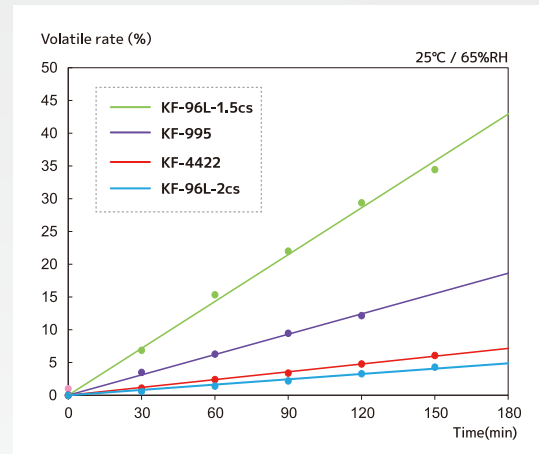
Silicone fluid in which a portion of methyl group is replaced with an ethyl group

Features

POINT 1	Volatile
POINT 2	Smooth and light feeling
POINT 3	High compatibility with hydrocarbon, oils, OMC, etc.

- Improvement of compatibility in formulations contained various ingredients
- Adds a lighter feel to W/O-based formula and Oil-based formula

Volatility



General Properties

Grade	INCI	Viscosity 25°C, mm ² /s	Specific gravity 25°C	Refractive index 25°C	Boiling point °C
KF-4422	ETHYL METHICONE	2.2	0.863	1.400	227

(Not specified values)

Compatibility with Other Oils

	KF-96L-1.5cs	KF-96L-2cs	KF-995	KF-4422
KF-96A-100cs	S	S	S	S
Triethylhexanoin	S	S	S	S
Squalane	S	S	S	S
Isostearic Acid	S	S	S	S
Joboba Oil	S	S	S	S
Ethylhexyl Methoxycinnamate	I	I	I	S
Ethanol(95vol%)	I	I	S	I
Water	I	I	I	I

S... Soluble I... Insoluble (concentration 50 wt%, RT)

Compatibility with Surfactants

	KF-96L-1.5cs	KF-96L-2cs	KF-995	KF-4422
KF-6017	S	S	S	S
KF-6028	S	S	S	S
KF-6038	S	S	S	S
KF-6048	S	S	S	S
KF-6104	S	S	S	S
KF-6105	S	S	S	S
KF-6106	S	S	S	S
KF-6115	S	S	S	S
KP-578	S	S	S	S

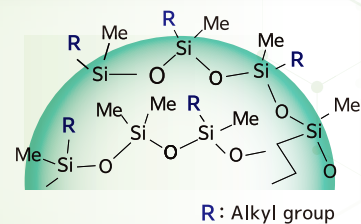
S... Soluble (concentration 20 wt%, RT)

Shin-Etsu Silicone introduces a new product that can easily impart superior feel and function of silicone powder to formulations!

KM-440 NEW

Silicone Powder Water-Suspension

Structure Model

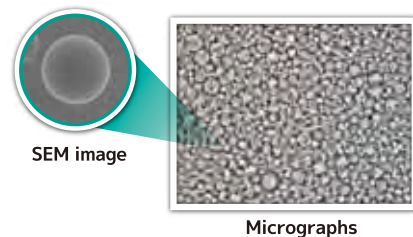


High concentration of alkyl modified silicone rubber powder with very soft feel is dispersed in water

Features

- POINT 1** | Simply imparts a soft silky feel and soft-focus effect to the formulation
- POINT 2** | High sebum absorption capacity is exhibited because of alkyl-modified powders.
- POINT 3** | Ease of use in skin care formulations

Particle State



General Properties

Grade	INCI	Composition %	Modified type	Average Particle size μm	Rubber hardness	pH	Ionic	Chinese INCI ★
KM-440	VINYL DIMETHICONE/LAURYL DIMETHICONE CROSSPOLYMER	60.0	Alkyl	5	N/A	6	Nonionic	○
	Others	2.3	—	—	—			

★ Inventory of Existing Cosmetic Ingredients in China (2015)

(Not specified values)

- The data and information presented in this catalog may not be relied upon to represent standard values. Shin-Etsu reserves the right to change such data and information, in whole or in part, in this catalog, including product performance standards and specifications without notice.
- Users are solely responsible for making preliminary tests to determine the suitability of products for their intended use. Statements concerning possible or suggested uses made herein may not be relied upon, or be construed, as a guaranty of no patent infringement.
- For detailed information regarding safety, please refer to the Safety Data Sheet (SDS).
- The silicone products described herein have been designed, manufactured and developed solely for general industrial use only; such silicone products are not designed for, intended for use as, or suitable for, medical, surgical or other particular purposes. Users have the sole responsibility and obligation to determine the suitability of the silicone products described herein for any application, to make preliminary tests, and to confirm the safety of such products for their use.
- Users must never use the silicone products described herein for the purpose of implantation into the human body and/or injection into humans.
- Users are solely responsible for exporting or importing the silicone products described herein, and complying with all applicable laws, regulations, and rules relating to the use of such products. Shin-Etsu recommends checking each pertinent country's laws, regulations, and rules in advance, when exporting or importing, and before using the products.
- Please contact Shin-Etsu before reproducing any part of this catalog. Copyright belongs to Shin-Etsu Chemical Co., Ltd.

"Shin-Etsu Silicone" is a registered trademark of Shin-Etsu Chemical Co., Ltd.

<https://www.shinetsusilicone-global.com/>



The Development and Manufacture of Shin-Etsu Silicones are based on the following registered international quality and environmental management standards.



Gunma Complex ISO 9001 ISO 14001
(JCQA-0004 JCQA-E-0002)
Naoetsu Plant ISO 9001 ISO 14001
(JCQA-0018 JCQA-E-0064)
Takefu Plant ISO 9001 ISO 14001
(JQA-0479 JQA-EM0298)

ShinEtsu

Shin-Etsu Chemical Co.Ltd.

Silicone Division Sales and Marketing Department I

6-1, Ohtemachi 2-chome, Chiyoda-ku, Tokyo, Japan Phone : +81-(0)3-3246-5152 Fax : +81-(0)3-3246-5362

Shin-Etsu Silicones of America, Inc.

1150 Damar Drive, Akron, OH 44305, U.S.A. Phone : +1-330-630-9860 Fax : +1-330-630-9855

Shin-Etsu Silicones Europe B. V.

Bolderweg 32, 1332 AV, Almere, The Netherlands Phone : +31-(0)36-5493170 Fax : +31-(0)36-5326459

This is an edited version of the product data released on May, 2021.

©Shin-Etsu 2021.5①D.F. Web in Japan.